

PART OF SECTION 19, T.7N., R.1W., S.L.B. & M.  
**MOUNTAIN ORCHARD ESTATES**  
LOTS 4-10

TAXING UNIT: 11

IN PLEASANT VIEW CITY

SCALE 1" = 50'

SEE PAGE 32

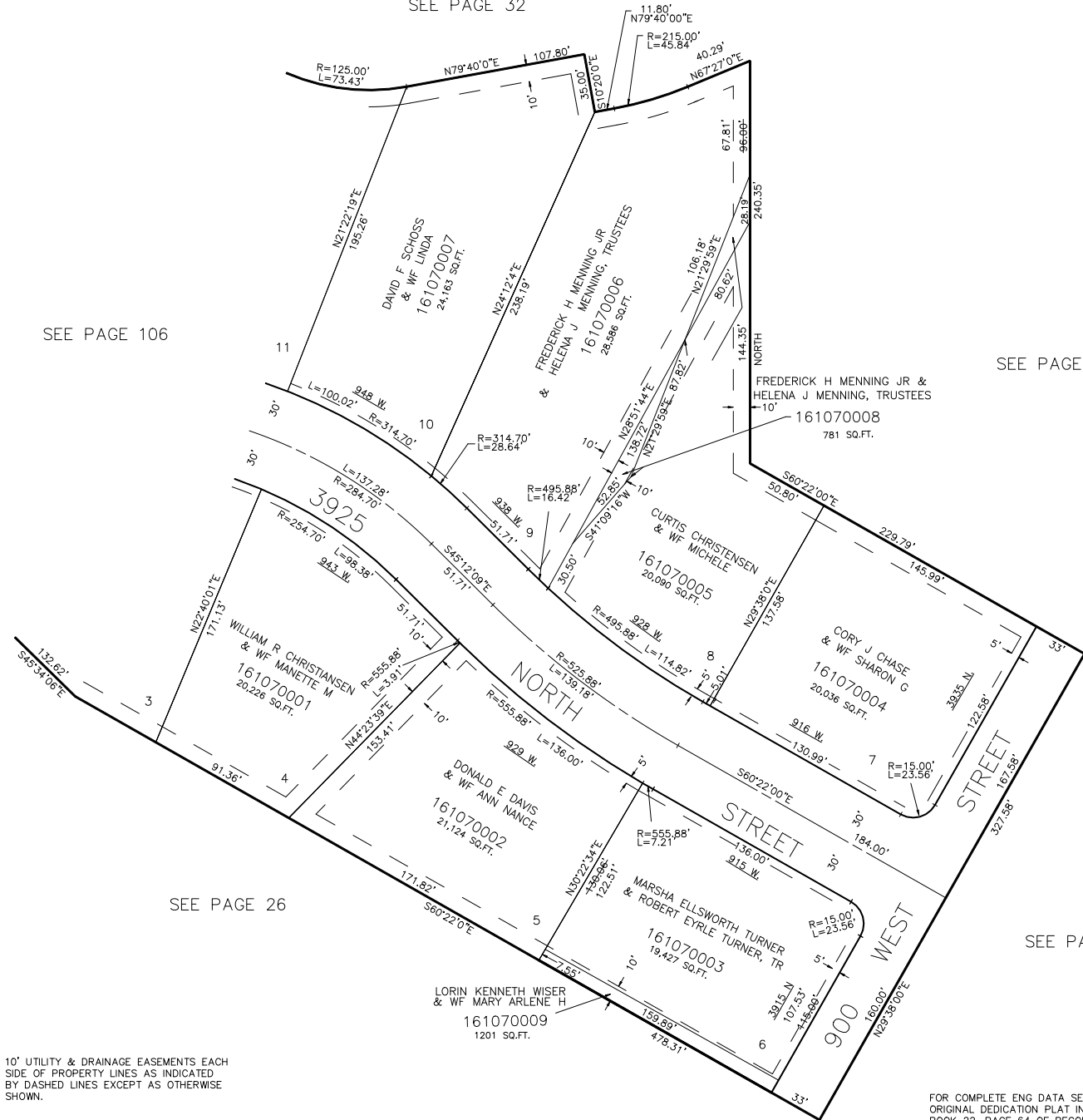
SEE PAGE 106

SEE PAGE 14

SEE PAGE 26

SEE PAGE 24

SEE PAGE 23



10' UTILITY & DRAINAGE EASEMENTS EACH SIDE OF PROPERTY LINES AS INDICATED BY DASHED LINES EXCEPT AS OTHERWISE SHOWN.

FOR COMPLETE ENG DATA SEE ORIGINAL DEDICATION PLAT IN BOOK 22, PAGE 64 OF RECORDS.